



MONTHLY MEMBERSHIP PROGRESS REPORT

District 201W1

Results as of: 01/31/2018

GMT: ANN ELDRIDGE

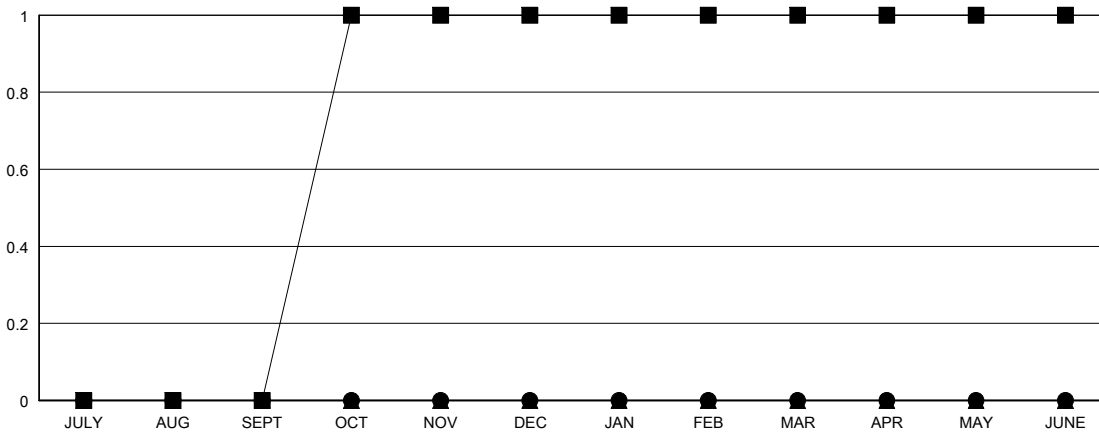
LOCATION AUSTRALIA

GMT CA

Clubs			
RESULTS FOR 2017-2018			
QUARTER	NEW CLUB GOAL	NEW CLUBS	DROPPED CLUBS
JULY/AUG/SEPT	0	0	0
OCT/NOV/DEC	1	0	1
JAN/FEB/MAR	0	0	0
APR/MAY/JUNE	0	0	0

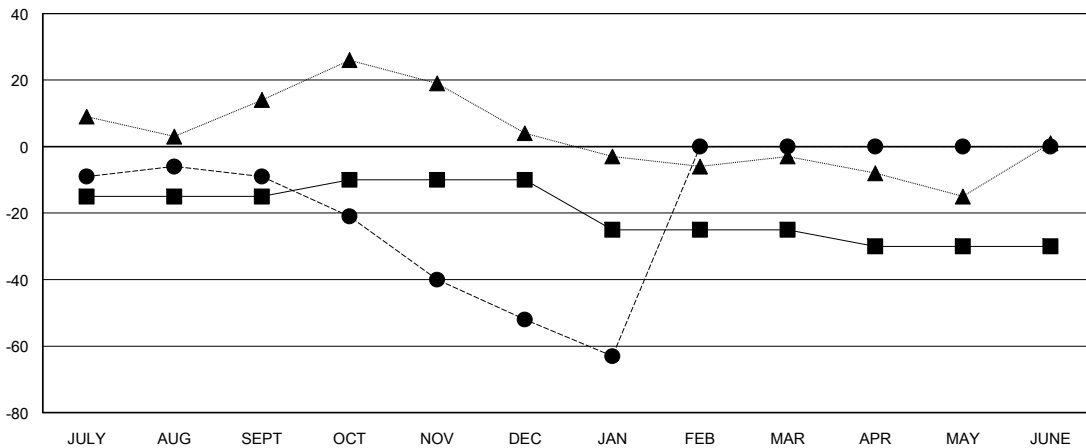
Members			
RESULTS FOR 2017-2018			
QUARTER	MEMBER GROWTH NET GOAL	MEMBER GROWTH ACTUAL	DROPPED MEMBERS ACTUAL (including transfers)
JULY/AUG/SEPT	-15	23	29
OCT/NOV/DEC	5	20	51
JAN/FEB/MAR	-15	1	12
APR/MAY/JUNE	-5	0	0

GOALS AND ACTUAL NEW CLUBS CUMULATIVE



- - CURRENT YEAR GOALS FOR NEW CLUBS
- - CURRENT YEAR ACTUAL NEW CLUBS
- ▲ - LAST YEAR ACTUAL NEW CLUBS

GOALS AND ACTUAL MEMBERS CUMULATIVE



- - MEMBER GROWTH NET GOAL
- - MEMBER GROWTH ACTUAL
- ▲ - LAST YEAR MEMBERSHIP ACTUAL

DROPPED CLUBS: 1

18 CLUBS OF 45 ADDED 1 OR MORE NEW MEMBERS

GENDER DISTRIBUTION	
MALE	455 (57.52%)
FEMALE	336 (42.48%)
Women Percentage Fiscal Year Goal: 45%	

DROPPED MEMBERS	
DECEASED	3
CLUB CANCELLED	0
OTHER	89
TOTAL	92

[CLICK HERE FOR CUMULATIVE MEMBERSHIP DATA](#)

TOTAL FAMILY UNIT MEMBERS	218
FAMILY MEMBERS PAYING HALF DUES	111